

Children Looked After – The Role of the Corporate Parenting Board

Presentation by

LINX (Lancashire's Children in Care Council)

County Councillor Sue Prynne, Chair of the Corporate
Parenting Board

&

Tony Morrissey, Deputy Director for Children's Services

10 July 2015

Aims of Presentation

To outline the:

- Purpose of Corporate Parenting Board
- Priorities
- Life in Care
- Achievements
- Facts
- Continuous Improvement

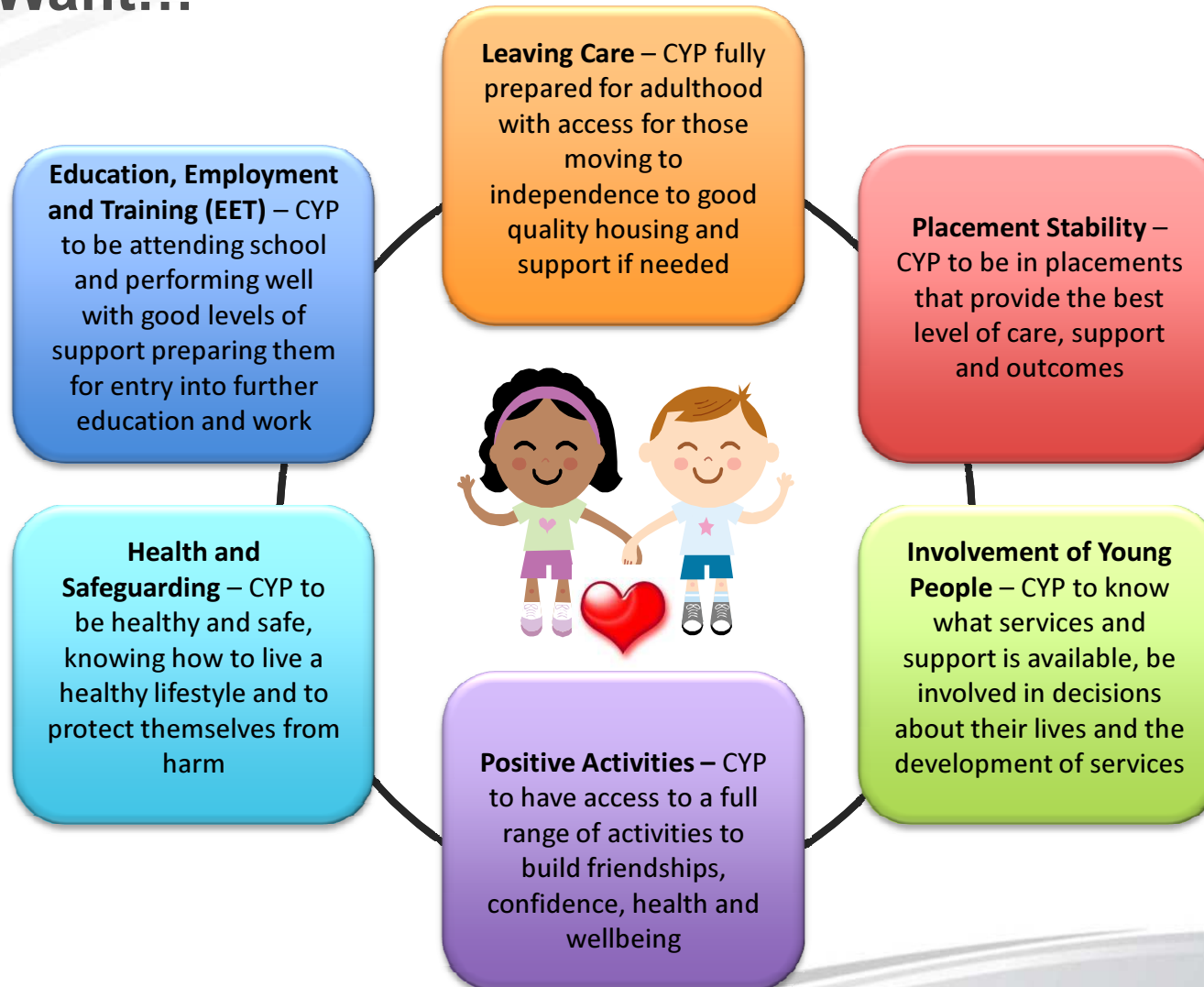
How the Board Works

- Bi monthly evening meetings
- Agenda linked to agreed priorities
- Active involvement of young people
- Young people set the agenda and chair one meeting per year
- Elected members meet prior to the meeting
- Young people meet prior to the meeting
- Elected member champions
- Working group support
- Presentation, reports, interactive activity and celebration
- Reports to the Cabinet Member for Children, Young People and Schools

Purpose of the Corporate Parenting Board

- Promote awareness
- Secure commitment & contribution
- Set high expectations & hold to account
- Listen & involve children and young people
- Oversee and monitor performance
- Consider the outcomes of regulatory visits and inspection reports
- Ensure strategies join up and prioritise children looked after
- Celebrate the achievements of children looked after
- Ensure adequate resources provided
- Undertake visits & receive feedback
- Comply with UN Convention on Rights of Child

Priorities - Corporate Parenting Board – We Want...



Children Looked After need to be listened to

Life for us in care in Lancashire

Being in care: What is different for us?

It's important to remember that...

“everyone's in care for different reasons” and that “everyone is an individual”.

All children and young people have different needs but for those that are in care there are some things that are different. Our experiences are different and we have different needs.

Some things about Children Looked After (CLA) that maybe people do not think about...

Your home or placement:

- Sometimes we have numerous placements.
- Some people might feel like it is not their home.
- Learning to live with other young people.
- Living in a different area to where you grew up.

The people:

- There are lots of people involved in making decisions for you.
- Sometimes we are the last to find out important information.
- It is not your family – someone is paid to look after you.
- You do not always have strong relationships with the people in your life.

Rules:

- Getting consent to go on trips.
- Getting consent for photographs.

Leaving care:

- Moving into independence – feeling too young.
- Provision when leaving care is reduced.

Some other activities...

- The Children in Care Council is now part of the Lancashire Youth Council structure.
- Young people from the Children in Care Council attend monthly PULSE meetings – The Health and Well-being board for young people in Lancashire.
- The Children in Care Council are involved in the Recruitment and Selection of Lancashire County Council staff.
- The Children in Care Council lead on 50% of all Corporate Parenting Board Meetings and deliver a full young person led meeting each year.
- The Children in Care Council deliver training and presentations to the Children's Trust Workforce.
- The Children in Care Council are represented at several National Forums.

Some things we like...

We like being involved in decisions made about us.

Having the Children in Care Council is important as it gives the opportunity for children and young people to have their voices heard.

A young person said, “I’m proud to be part of LINX (Lancashire Children in Care Council), I have met some great people and my confidence is growing. I like having the opportunity to make a difference for all young people in care and leaving care”.

Some things we want to change...

- “I know there are rules... but reasons behind decisions are not always made clear”.
- More support when leaving care.
- The Corporate Parenting Board is good but sometimes difficult for young people to understand but we like that young people are able to be involved.
- Children and young people would like more child friendly information.

So What Have We Achieved?

Words to Actions to Outcomes

Action	Difference Made
Celebrating Achievement	Supported annual PROUD celebration event.
Reassurance from Activity Days	From 27 children that attended, 25 were matched with adopters. It was noted that the way in which the CPB had monitored and evaluated the Activity Days at various stages of the process, was a good example of the Board exercising its scrutiny function.
Regulation 22 Visits carried out by Elected Members	One issue raised on a visit was: To explore further any issues and training for staff around young people's mental health and evidence support offered with regards the dangers of substance misuse. The action that has been taken since is: Addaction and SCAYT+ presented workshops to the staff team in December 2014 to further the teams development and knowledge base. This enabled the team to enhance the support offered directly to the young people.
Scrutiny of Educational Attainment	The Boards concern around KS4 have been referred to LCC Education Scrutiny Committee to ensure a thorough review is undertaken, alongside informing the Cabinet Member for Children, Young People and Schools. The issue has also been referred to the Cabinet Committee for Performance Improvement (CCPI) for full consideration.
Performance Report scrutinised by LINX before every Board meeting	67 in 100 Children Looked After have up to date health assessments and 78 in 100 have an up to date dental assessment, both lower than the previous year. As a result of this issue being raised, locality tracking groups have been established and also a strategic monitoring group. Current performance is now at 85.1%.

So What Have We Achieved? Cont'd

Words to Actions to Outcomes

Action	Difference Made
Raise awareness of the Pupil Premium	A small number of responses were received. Most were positive and welcomed the interest of the young people. There was one negative response from a school who seemed to react in a defensive way to being challenged on this issue by young people outside of their school. However the development of the Education Provision Map, which has to be provided by schools for each looked after child, had greatly increased the transparency around the use of pupil premium grant and the impact it has on pupil progress and attainment. Currently over 90% of CLA have an Educational Provision Map in place with each documenting the use made of PPG.
Joint working with LSCB	Agreed to hold two Challenge Panels in September 2015, to get assurance that CLA are appropriately safeguarded.
Training for Elected Members on being an effective Corporate Parent	A development session was held for Elected Members explaining their roles and expectations as a member of the Board. The Chair of Liverpool City Council's CPB also attended the session and shared their recent Ofsted inspection experience. Good practice was shared between Lancashire and Liverpool around corporate parenting and CC Prynne then attended a CPB meeting at Liverpool City Council.

Life in Care – Facts

Question	Answer
How many children and young people does Lancashire County Council have in its care?	Number has risen over last year and stood at 1,626 at 31 March 2015. Rate per 10,000 at 66.6 is above the national average (60.0) and statistical neighbour average (61.2) and well below the regional rate (81.0).
What is the peak age for children/young people coming into our care?	Children and young people aged under 10 years account for over half (54.8%) of those in our care but the peak ages for entering care are 0 - 1 years old.
Where might children in our care live?	With foster carers, in a children's home, with relatives/family friends.
What proportion of these live with foster parents?	Around two thirds (66%) are in foster care.
What is the main reason why children and young people come into care?	Abuse and neglect along with family stress/problems are the main reasons.
How many CLA are also known to the Youth Justice system?	Around 5% of children looked after have cautions/convictions.
At what age do Care Orders end?	18 years old – however we know in reality with our own families that ideally young people should stay with foster carers until 21 years old.

Life in Care – Facts Cont'd...

TOTAL NUMBERS OF CHILDREN LOOKED AFTER					
District Team	Mar-12	Mar-13	Mar-14	Mar-15	% of Total CLA
Lancaster	119	140	110	131	8.1
Fylde/Wyre	90	94	73	104	6.4
Preston	193	199	178	183	11.3
Chorley/ South Ribble	178	175	153	153	9.4
West Lancashire	128	135	118	109	6.7
Hyndburn/ Ribble Valley	185	211	151	175	10.8
Burnley	157	204	219	241	14.8
Pendle	188	221	176	184	11.3
Rossendale	86	103	88	88	5.4
District	1324	1482	1266	1368	84.1
Central teams*	-	-	325	258	15.9
Lancashire CLA	1324	1482	1591	1626	100



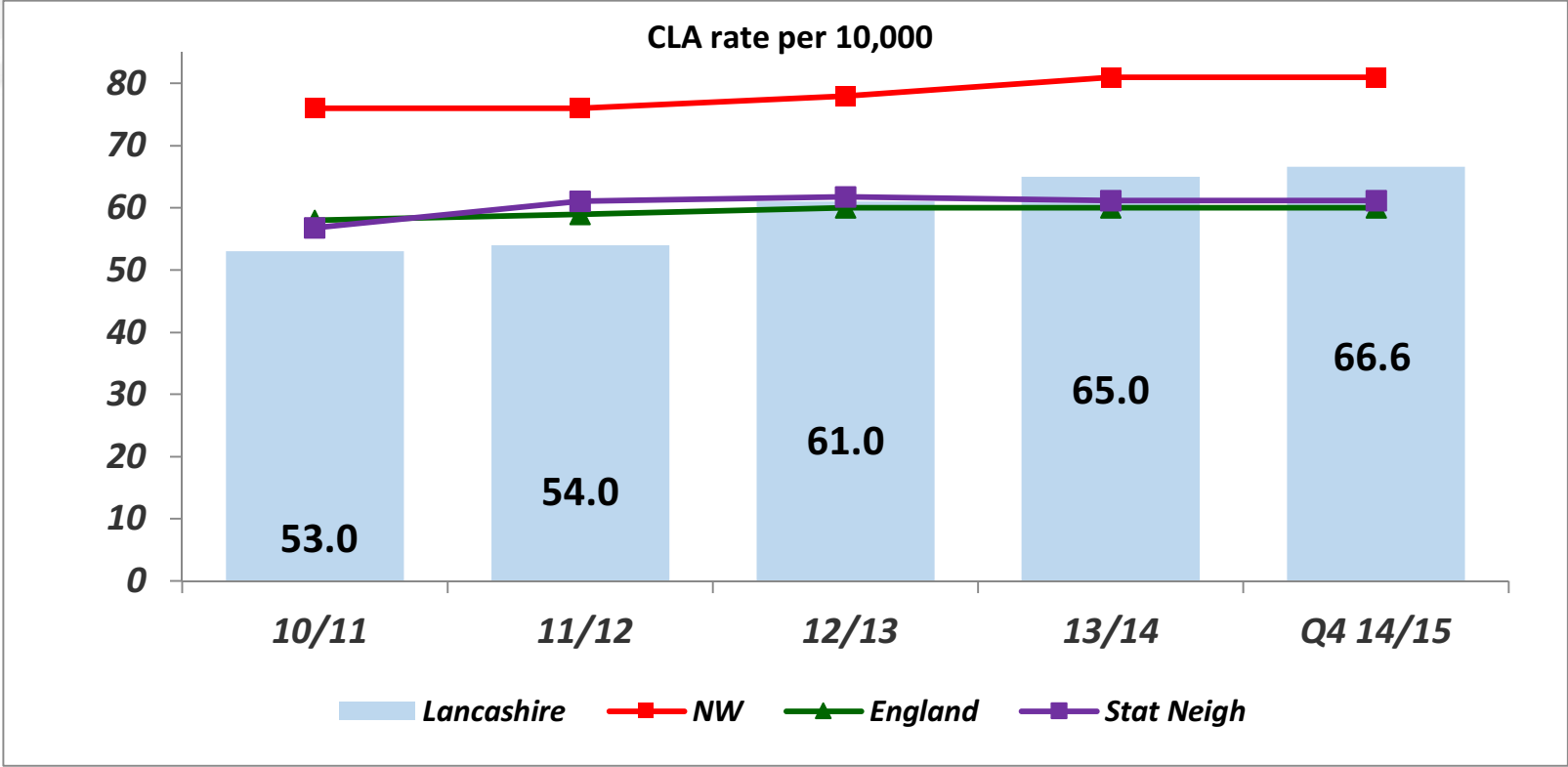
Commencement of LCS

** Where cases on LCS are not assigned to a district CSC team*

Life in Care – Facts Cont'd...

RATE PER 10,000 (0 – 17) OF CHILDREN LOOKED AFTER				
District	Mar-12	Mar-13	Mar-14	Mar-15
Lancaster	45.2	53.2	41.8	49.3
Fylde/Wyre	26.9	28.1	21.8	31.1
Preston	64.2	66.2	59.2	60.2
Chorley/ South Ribble	39.5	38.9	34	33.8
W Lancs	56.7	59.8	52.3	48.8
Hyndburn/Ribble Valley	60.4	68.9	49.3	57.4
Burnley	80.5	104.6	112.3	123.9
Pendle	91.5	107.5	85.6	88.4
Rossendale	56.9	68.2	58.3	58.2
Lancashire CLA	54.4	60.9	65.4	66.6

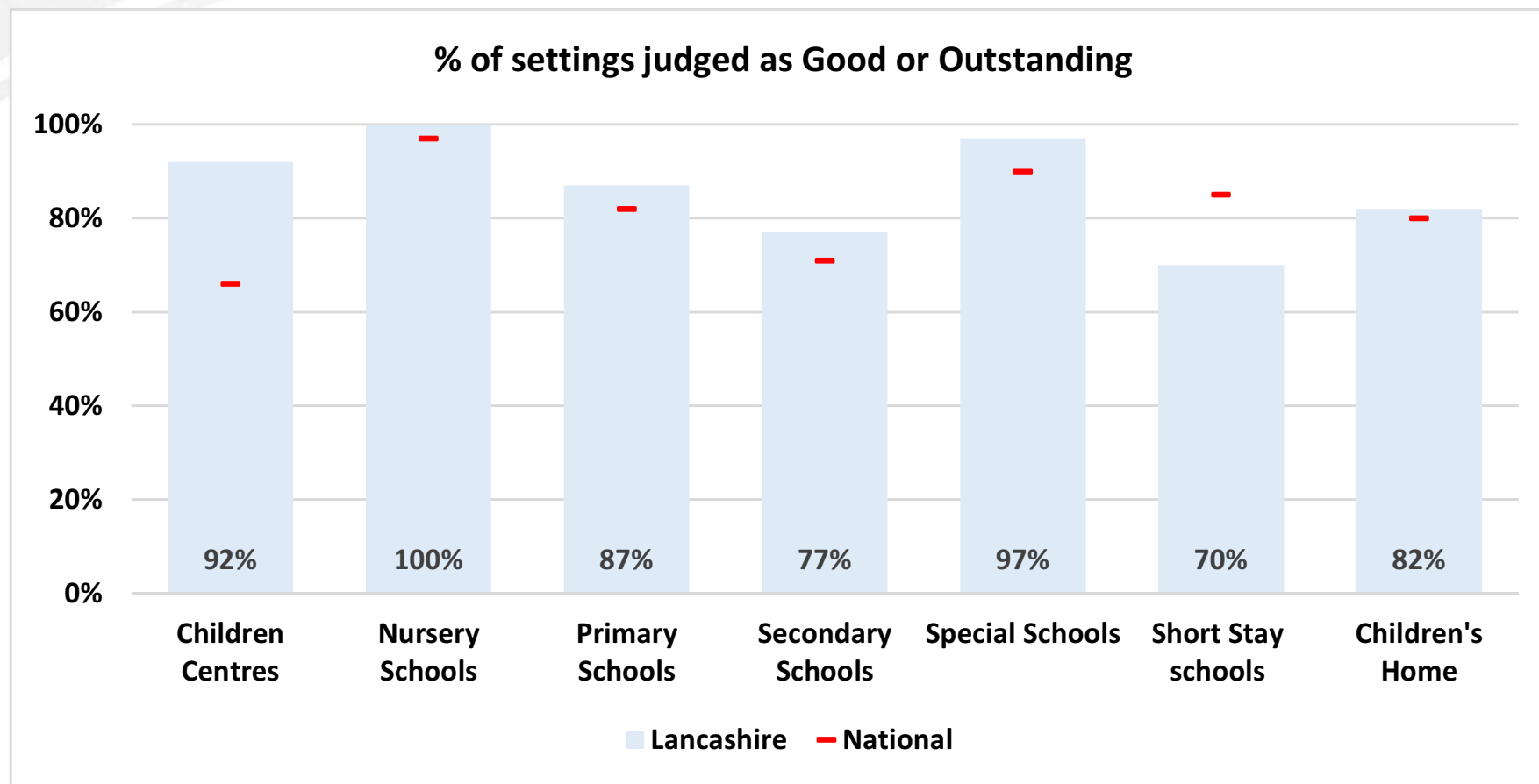

Commencement of LCS



Inspection Facts

	Total Inspected (Jun 14)	Number Judged Good or Outstanding	Number judged as Inadequate
Children Centres	59	54 (92%)	0
Nursery Schools	24	24 (100%)	0
Primary Schools	482	417 (87%)	2 (0.4%)
Secondary Schools	83	64 (77%)	8 (10%)
Special Schools	30	29 (97%)	0
Short Stay schools	10	7 (70%)	1 (10%)
Children's Home	17	14 (82%)	1 (5.8%)

Inspection Facts



Performance Data - Strengths

Measure	2014 Perf	Rank (out of 152 LAs)	Quartile	Eng Ave
CLA Adopted in the Year	15%	85	3	17%
Long Term Placement Stability of CLA	73%	20	1	67%
CLA Placed more than 20 miles away from Home	7%	10	1	13%
CLA – Level 4+ Grammar, Punctuation & Spelling at KS2	47%	48	3	49%
CLA – Persistent Absentees	4.3%	27	2	4.7%
CLA – Fixed Term Exclusions	7.0%	21	1	9.7%
Emotional Health of CLA (Strengths and Difficulties Questionnaire)	13.0	29	1	13.9
CLA Offending	5.2%	33	2	5.6%
CLA – Level 4+ Maths at KS2	61%	38	2	61%

Validated figs for 2015 will be available at the end of the year

Possible Key Lines of Enquiry for Inspectors based on Performance Data

Measure	Current Perf	2014 Perf	Rank (out of 152 LAs)	Quartile	Eng Ave
CLA Rate Per 10,000	66.6 (Mar 15)	65.0 (2014)	83	3	60.0
% of care leavers in Suitable Accommodation	84.4% **	76.0%	103	3	77.8%
% of care leavers in Employment, Education or Training	38.8%	40%	104	3	45%
% of CLA 5 achieving GCSEs A* - C	16.5% **	40% (12/13)	96* (12/13)	4 (12/13)	36.6% (12/13)
% of CLA 5 achieving GCSEs A* - C inc Eng & Maths	8.9% **	12.9% (12/13)	46* (12/13)	4 (12/13)	15.3% (12/13)

* Not out of 152 LAs

** Not comparable to previous year due to DfE definition change for the indicator

Validated figs for 2015 will be available at the end of the year

Continuous Improvement

The Board will look to:

- Strengthen role of LINX (CiCC) and LINX Junior (primary aged children) and increase its membership.
- Active monitoring of the Executive Summary: CLA Sufficiency and Commissioning Effective Placements Strategy – 2014-2017 and Activity Days.
- Maintain monitoring of all services available to CLA.
- Strengthen involvement of Elected Members including Reg 22 visits to Out of Borough children.
- Developing new ways of communicating with CLA.
- Identifying and linking in with partners on key issues eg police for CSE and District Councils for housing, LSCB – Challenge Panels.
- Promote and raise awareness of the Board.

Questions?

CPB to LSCB

- How can we continue to support the LSCB?

LSCB to CPB – any questions?

For further information on the Corporate Parenting Board,
please visit the [website](#).